

IN OVERALL PERFORMANCE

ALL
IN
ONE

light
still remains



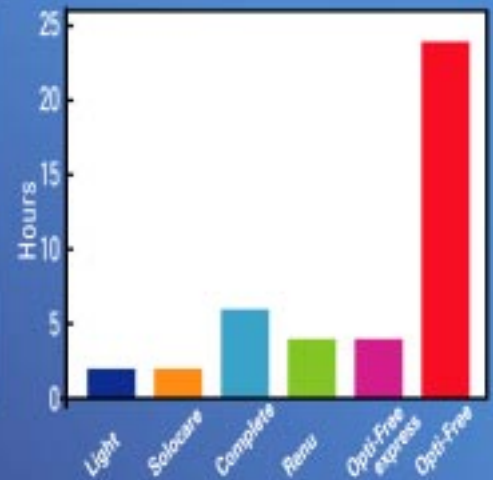
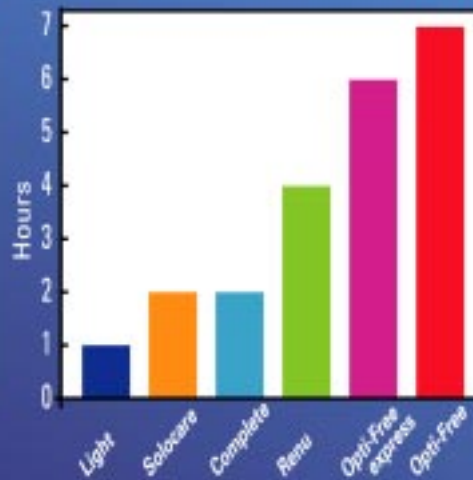
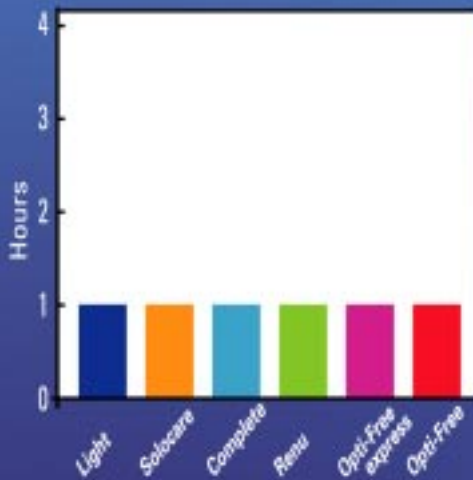
THE MOST
EFFECTIVE
MULTIPURPOSE
SOLUTION
AVAILABLE

ANTIBACTERIAL PERFORMANCE KILL TIMES

Pseudomonas Aeruginosa
NCIB 8626

Serratia Marcescens
NCTC 10211

Staphylococcus Aureus
NCTC 10788



Source: Independent laboratory results using draft ISO/CEN Standard Methods (data on file)

CLINICAL PERFORMANCE

Sauflon All In One Light far outperformed the control (Renu & Peroxide) in a 6 month clinical study conducted to attain FDA approval, also showing outstanding antimicrobial efficacy and excellent cleaning ability.

(data on file)



PRACTITIONER EVALUATION

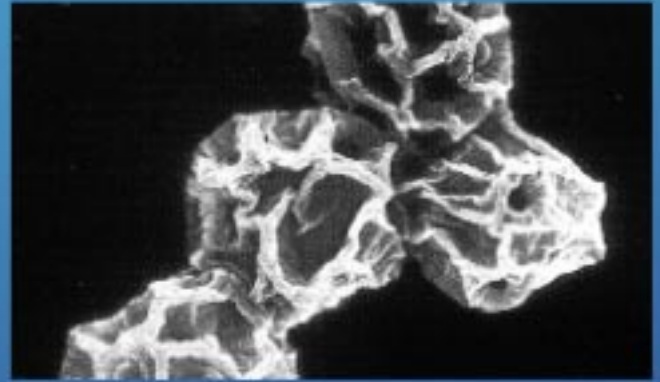
"Without doubt the most effective solution we have ever used in our practice. Even patients with known sensitivity problems experienced no discomfort and patients who had problems with lenses drying out towards the end of their wearing time reported that this no longer occurred."

Source: Evaluating Practitioner (data on file)

PROVING EFFICACY AGAINST ACANTHAMOEBA

It is now well established that *Acanthamoeba* is far more difficult to kill in the cyst form than it is in the trophozoite form.

Source: *Reviews in Medical Microbiology* 1984, volume 5, pages 12-20.



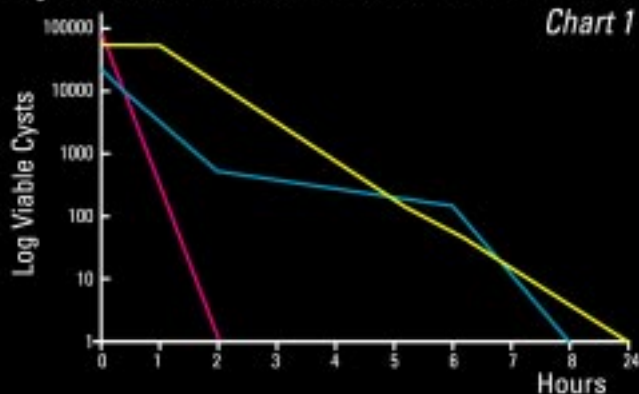
Reproduced by kind permission of David Seal et al. Source: *BJOO* 1994.

However, the method used to cultivate cysts in the Laboratory is critical if meaningful results are to be obtained as to how effective a contact lens care product is at killing cysts. In some cases the testing laboratory cultivate the cysts in artificial media while others utilise nutrient agar plates seeded with bacteria e.g. *E.coli* (the natural food source of the organism).

The encystment medium and methods used may have a significant effect on the resilience of the organism and indeed the maturity of the cyst formed. As is illustrated in the two charts below this may then lead to variable and conflicting *Acanthamoebicidal* efficacy results. Chart 1 (a composite of three studies) shows three multipurpose solution products achieving 4-5 log reduction of *Acanthamoeba* cysts at different times in a 24 hour period, while Chart 2 only shows one product achieving 4-5 log reduction with the other two products having no apparent effect in a 24 hour period.

Cysts cultivated in artificial media

Chart 1

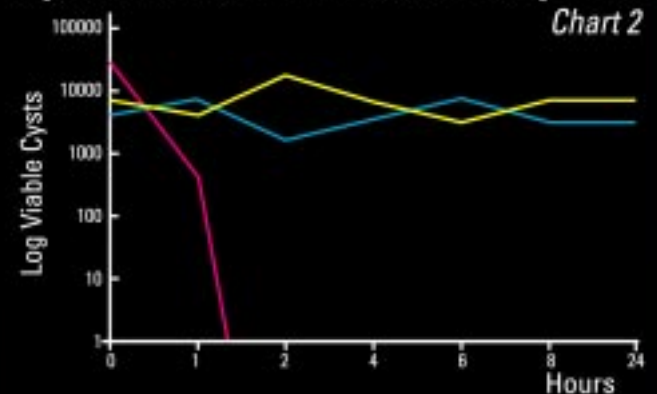


Key

- **All In One** against *Acanthamoeba polyphaga* Ac/Phl/Web Cysts. Isolated from keratitis in England in 1995. Cultured on non-nutrient agar plates seeded with bacterium *Escherichia coli* (NNA-*E.coli*).
- **All In One Light** against *Acanthamoeba polyphaga* SHI cysts isolated from keratitis in 1998. Cultured on SK#5A medium.
- **OPTI-FREE express** against *Acanthamoeba polyphaga* ATCC30871 cysts. (American type culture collection.) Cultured on peptone yeast extract-glucose medium (PYG).

Cysts cultivated in bacterial plates

Chart 2



Key

- **All In One**
- **All In One Light**
- **OPTI-FREE express**

All against *Acanthamoeba polyphaga* Ac/Phl/Web Cysts. Isolated from keratitis in England in 1995. Cultured on non-nutrient agar plates seeded with bacterium *Escherichia coli* (NNA-*E.coli*).

MARKET LEADER* - AND WHY



- **MEETS PROPOSED ISO 14729 STANDARD FOR STAND ALONE DISINFECTION**
- **OUTSTANDING ANTIMICROBIAL ACTIVITY**
*Proven by independent laboratory tests-
Data available on request*
- **REMARKABLE FREEDOM FROM PATIENT REACTIONS**
*Six month clinical trial in USA demonstrated
that Light outperformed Renu and Peroxide
in terms of lack of patient reactions*
- **ENHANCES LENS COMFORT**
- **HELPS TO PREVENT LENSES DRYING OUT AT THE END OF THE DAY**
- **CLINICALLY PROVEN WORLDWIDE**
*The Light formulation is being used by practitioners
in 75 countries throughout the world*
- **REMOVES PROTEIN**
- **RECOMMENDED FOR PATIENTS WITH SENSITIVE EYES**
- **OPTICIAN ONLY**



SAUFLON Only for opticians
The company you can trust

*The Sauflon Light formulation leads the UK multipurpose solution market in volume and value share