



Features

- Contains a biomimetic additive, AquAtract™, which enhances biocompatibility.
- Advanced Edge Technology (AET)® manufacturing process.
- Smooth transitions between zones, cut in a single pass.
- Comfort chamfers.
- Aspheric optics to minimise aberration.
- Large parameter range.
- Reproducible process.
- UVA and UVB protection.
- Handling tint.
- Exclusively available to eye care professionals.
- High levels of re-fitting success.

Benefits

- Encourages hydrogen bonding of water to the lens material leading it to retain water throughout wearing time.
- Superior comfort, vision, handling and stability for the patient.
- Excellent visual acuity
- More patients can be fitted.
- Patients receive the same high quality lenses every time.
- Protects the eye from harmful UV rays.
- Easy for patient insertion.
- Repeat business returned to the eye care professionals rather than the non-opticals.
- Optimised design ensures interchangeability with other disposable lenses.

bioclear™ TORIC Contains AquAtract™ for enhanced comfort

+6.00 to -8.00

Product Specifications:

MATERIAL	FILCON IV 1 + AquAtract™
WATER CONTENT	55%
MANUFACTURING METHOD	ADVANCED EDGE TECHNOLOGY®
BASE CURVE	8.7mm
DIAMETER	14.4mm
POWER RANGE	+6.00 to -8.00 (0.25DS steps)
CYLINDER OPTIONS	-0.75, -1.25, -1.75, -2.25
AXIS	10° to 180° (10° steps)
CENTRE THICKNESS (@ -3.00DS)	0.105mm
DK	21
DK/t (@ -3.00DS)	20
OPTIC ZONE	9.00mm
ORIENTATION MARK	Location mark at 6 o'clock
HANDLING TINT	AQUA
PACKAGING	3 and 6 pack

Advanced Edge Technology AET®

The AET® process is the patented process that applies design and production parameters to the nanometer levels of four decimal places. The result is a lens edge that is so thin and accurate it ensures extreme comfort with every lens.

bioclear™ TORIC

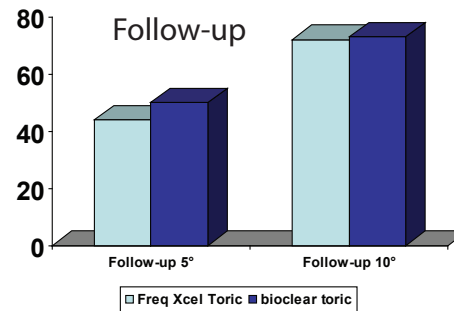
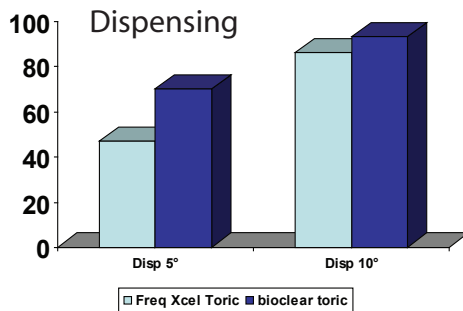
bioclear™ TORIC

Contains AquAtract™ for enhanced comfort

Fitting Characteristics*

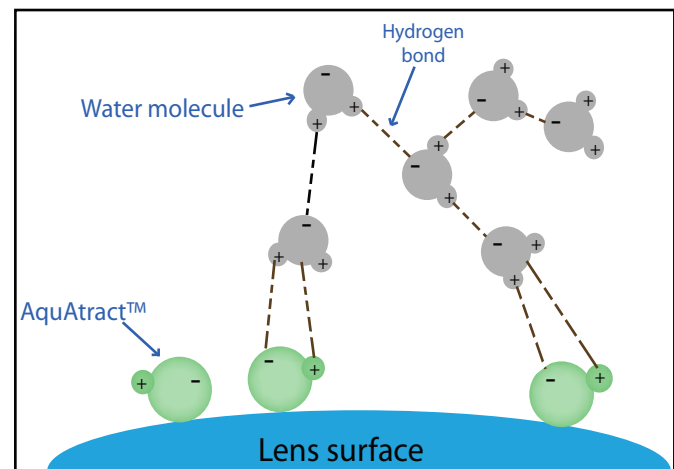
Lens Rotation

The graphs below show that bioclear™ toric performs exceptionally well for rotation thereby maintaining consistent visual acuity.

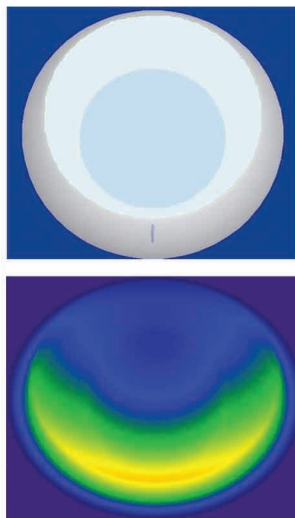


Enhanced Comfort

One of the most important attributes patients demand from their contact lenses today is comfort. The bioclear™ toric material includes an additive in the monomer mix which when polymerised encourages hydrogen bonding of water to the lens material leading it to retain water for longer. This results in the lens not drying out so readily providing more comfortable lens wear. Sauflon bioclear™ toric is ideal for those patients who currently experience dryness or discomfort during lens wear.



THICKNESS PROFILE



bioclear™ Lens Design

- Back surface toric.
- Prismatic front surface featuring a thickness equalising comfort curve.
- Aspheric optics to minimise aberration.
- Contains UV inhibitor.
- Location Mark at 6 o'clock.
- Prism ballast zone.
- Blended junctions cut in single pass.
- Smooth transition between zones.
- Junctionless design.
- Constant edge thickness.

 SAUFLON
Only for Opticians

*Clinical studies conducted by globally respected, independent clinical research group.